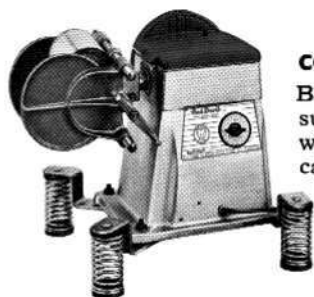


# Red Devil

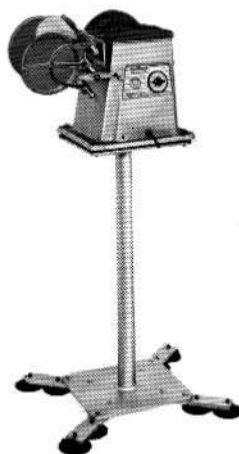
## No. 30 Paint Conditioner

### ACCESSORIES, SPECIFICATIONS AND PARTS LIST



#### COUNTER BASE

Base has automotive-type coil-spring suspension. Absorbs virtually all unwanted vibration. Shipped one to carton. No. CB, weight 13 lbs.



#### PEDESTAL BASE WITH FEET

Counter-high base with rubber suction-cup feet. Stands anywhere, no bolting down. Shipped one to carton. No. PB/F, weight 57 lbs.

#### STANDARD PEDESTAL BASE

Same as above but without suction cups. For permanent, bolt-down mounting. Shipped one to carton. No. SPB, weight 47 lbs.

### SPECIFICATIONS FOR NO. 30 PAINT CONDITIONER

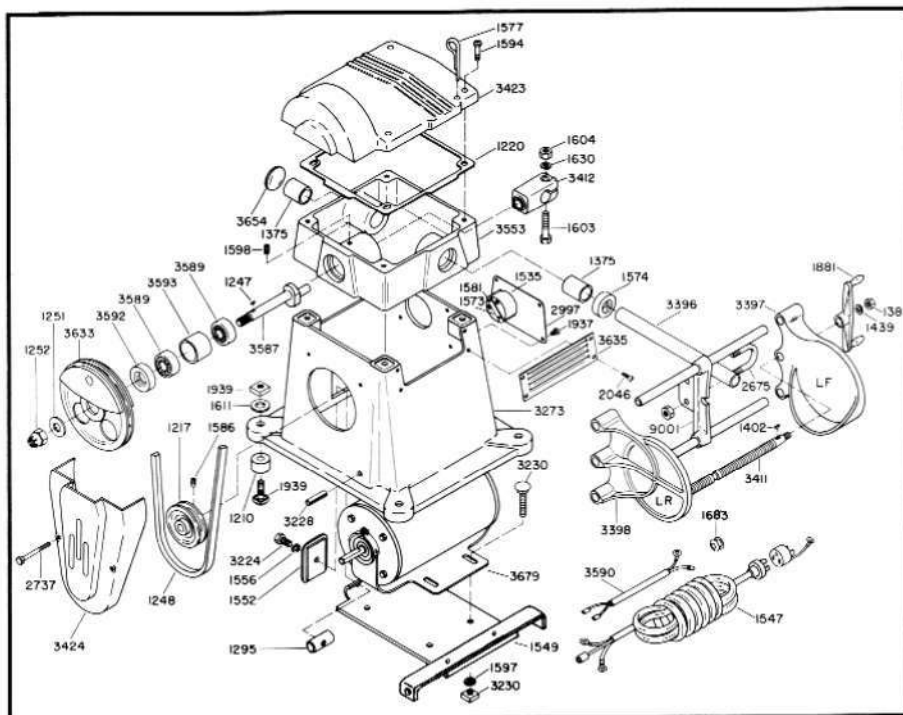
**Operating Space:** 22" wide, 26" deep, 21" high.

**Motor Equipment:** 1/4 H.P. 60 cycle, 110 volt A.C., unless otherwise specified. Can be supplied with explosion-proof motor and special voltage at extra cost.

**Lubrication:** Operates in a bath of oil that requires only occasional addition of good grade 20W SAE oil. Bayonet-type oil gauge supplied.

**Packing:** Completely assembled and mounted on skids. Remove oil plug in top of main casting and insert bayonet-type oil gauge after conditioner has been set in place.

**Shipping Weight No.30:125 lbs.**



1210 Rubber Feet (4)	1552 Square Washer	1937 Timer Screws (4)	3412 Universal Assembly
1217 Motor Pulley	1556 Lock Washer	1939 Carriage Bolt & Nut (4)	3423 Cover
1220 Gasket	1573 Timer Bracket	2046 Louver Screws (8)	3424 Belt Guard
1247 Woodruff Key	1574 Oil Retainer	2675 "U" Bolt & Nuts	3553 Housing Head
1248 Belt	1577 Oil Stick	2737 Belt Guard Screws (2)	3587 Crankshaft
1251 Washer	1581 Timer Bracket Screws (2)	2997 Name Plate	3589 Bearing (2)
1252 Nut	1586 Set Screw	3224 Bolt	3590 Short Electric Cord
1295 Pivot Block	1594 Cover Screws (4)	3228 Roll Pin (2)	3592 Crankshaft Oil Retainer
1375 Bushing (2)	1597 Lock Washer (4)	3230 Carriage Bolt & Nut (4)	3593 Bearing Spacer
1381 Nut	1598 Set Screw	3273 Base	3633 Crankshaft Pulley
1402 Woodruff Key	1603 Bolt	3396 Agitator Shaft	3635 Louver (2)
1439 Shake Proof Washer	1604 Nut	3397 Can Clamp (R)	3654 Welch Plug
1535 Timer	1611 Washer (4)	3398 Can Clamp (L)	3679 Motor
1547 Electric Cord	1630 Shake Proof Washer	3411 Clamp Screw	9001 Adapter-Guide Rod Assembly
1549 Motor Base Assembly	1683 Grommet		
	1881 Clamp Handle		

Figure in ( ) indicates number each of item if more than one.

**IMPORTANT: SERIAL NUMBER OF YOUR MACHINE MUST BE SPECIFIED WHEN ORDERING PARTS**

